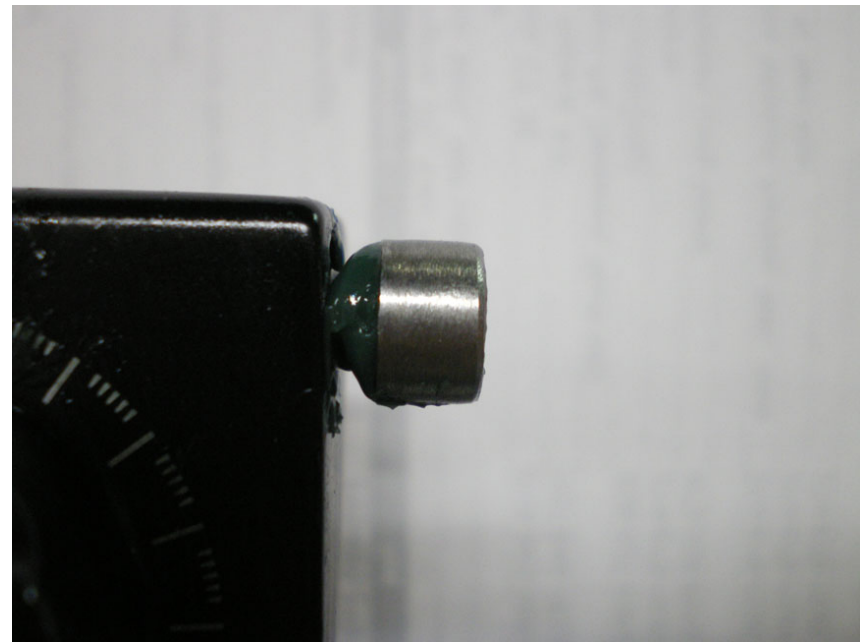


# Fuji D-6 iA Clamp Bolts

- A. In order for the iA clamp assemblies to reach adequate clamping force, it is important to apply grease under the bolt heads and to the bolt threads. All bolts on the iA system have a 7nm/max torque spec.



A.

# Fuji D-6 iA Clamp Bolts

B. The iA clamp works best when bolts are torqued in the following sequence:

- a) Lower bolts clamping to I-Beam rail-7nm. (top pic)
- b) Through-bolt clamping the saddle rails-7nm. (bottom pic)



a.



b.

# Fuji D-6 iA Clamp Bolts

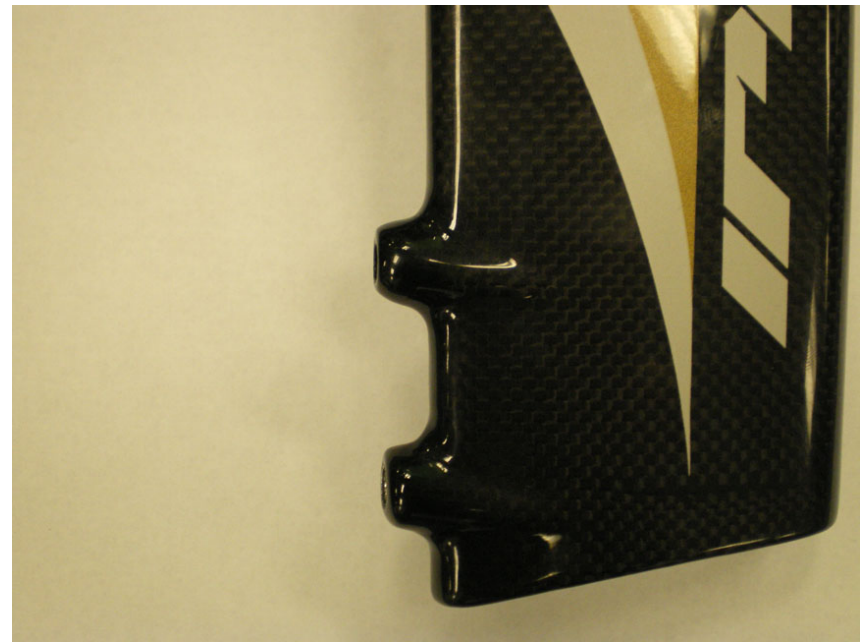
- C. Upper bolts clamping the saddle pivot cylinder-7nm. Be sure grease is applied under all bolt heads and to bolt threads!!



C.

# Fuji D-6 Seat Post Bolts

- D. Please note the 2 bolts used to clamp the post to D-6 integrated seat mast.



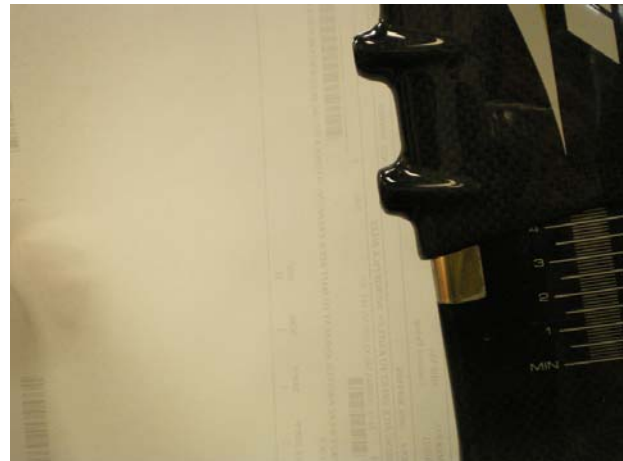
D.

# Fuji D-6 Seat Post Bolts

- E. It is very important that the 2 clamping bolts only contact the metal reinforced area on the back of the seat mast!
- F. **Do not** raise the post too high that the upper bolt does not contact the seat mast!
- G. **Do not** allow the lower bolt to ever clamp below the metal on the carbon!



E.



F. & G.

# Fuji D-6 iA Seat Post Sizing

- Measured from the bottom center of the post to the saddle rail, the lengths are:
  - 172mm
  - 212mm
- Please see the next slide for sizing ranges.



# Fuji D-6 iA Seat Post Sizing

FRAME SIZE	SHORT POST		LONG POST		Full Range Potential
	MIN	MAX	MIN	MAX	
48 cm (XS)*	<b>590mm</b>	<b>630mm</b>	630mm	670mm	<b>590mm - 670mm</b>
50 cm (S)*	<b>625mm</b>	<b>665mm</b>	665mm	705mm	<b>625mm - 705mm</b>
52 cm (S/M)**	605mm	695mm	<b>645mm</b>	<b>735mm</b>	<b>605mm - 735mm</b>
54 cm (M)**	665mm	715mm	<b>705mm</b>	<b>755mm</b>	<b>665mm - 755mm</b>
56 cm (M/L)**	690mm	780mm	<b>730mm</b>	<b>820mm</b>	<b>690mm - 820mm</b>
58 cm (L)**	700mm	790mm	<b>740mm</b>	<b>830mm</b>	<b>700mm - 830mm</b>
60 cm (XL)**	710mm	800mm	<b>750mm</b>	<b>840mm</b>	<b>710mm - 840mm</b>

\* Stock short post carbon shaft (length: 160mm)

\*\* Stock long post carbon shaft (length: 200mm)